



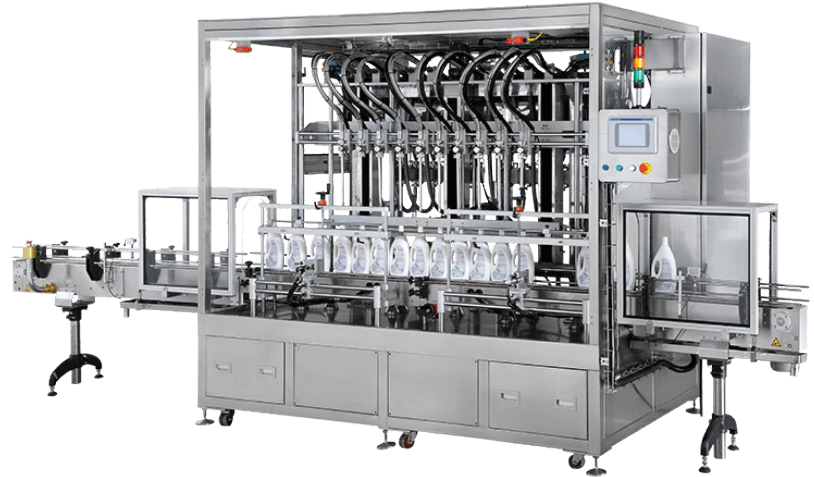
مجموعة شركات حسني  
HASSANI GROUP OF COMPANIES

*Since 1912*

# Production Facility

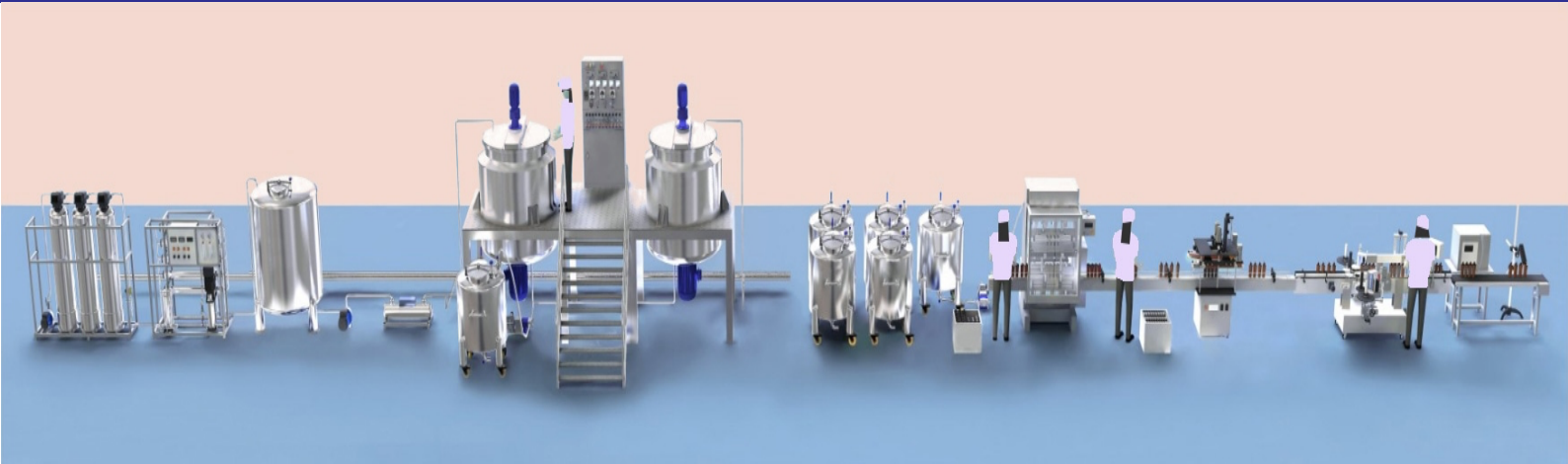


مصنع كراون للمنظفات والمطهرات ش.ذ.م.م  
Crown Detergents and Disinfectants Factory L.L.C



- 1. Our production lines** 6 lines with piston and gravity filling machines capable of filling from 50ml to 5000ml are 100% customized to fit your particular needs in each and every aspect, including output capacity, product line planning, compliance with hygienic and safety regulations, and many more.
- 2. Our production lines** delivers excellent flexibility and versatility with fast turnover intervals. One single production line can produce various liquid detergents with an hourly output range of 500L/H to 1500L/H.
- 3. Our production lines** are incorporated with a smart recipe management system that ensures the same formula is dosed and produced precisely and repeatedly in every batch. Quality, stability, and high production efficiency are consequently guaranteed.
- 4. Our production lines** are not only equipped with cutting-edge technology but also constructed from the highest quality materials and components. To ensure durability and longevity, most materials and components had been obtained from famous worldwide brands, such as ABB, 3M, NSK, SIEMENS, MITSUBISHI, etc.
- 5. Our production lines** are modular and designed to be adaptive to future expansion plans.

# Production Process



## Raw Material Acquisition, Storage, and Pre-processing

Our raw materials are acquired from some of the most famous chemical manufacturers and suppliers in UAE. Some raw materials are imported from USA, UK, Europe, and Asia. Dry raw materials are typically pre-dissolved for more convenient and precise dosing. Liquid ingredients such as surfactants and water are stored in tankers or drums, usually connected by pipes with the homogeneous mixer.

## Raw Material Dosing

Liquid ingredients and pre-dissolved dry ingredients are measured and dosed into the homogeneous mixer, as per the designed recipe and predetermined sequence. The dosing is measured by a weighing system connected with pneumatic pumps directly to mixing tanks (6 mixing tanks with capacity of 4.5 tons each), (2 pre-mixers with capacity of 2.5 tons each), from drums and IBC tanks.

## Reaction and Mixing

Along with and following the dosing of raw materials, chemical reaction and physical mixing are carried out in a stirred reactor, also known as 'homogeneous mixer'. The physical mixing is performed by multi-impeller agitators, controlled by the integrated PLC system. It starts as the raw material dosing and lasts for 90-120 minutes to achieve thoroughly mixed, homogeneous, stable detergent. At the final stage, thickeners and pH adjusters are added to perfect the formula and generate desired viscosity and pH value.

## Intermediate Storage and Sitting

The fully-mixed final detergent is pumped to intermediate storage tankers (4 holding tanks with capacity of 5.5 tons each), wherein the product is let sit for 5-12 hours. During that period, the air bubbles and foam in the product are removed, in order to achieve accuracy in the subsequent bottling process. Additionally, the intermediate storage tankers transform the manufacturing process from batch-wise dosing and mixing to continuous bottling, capping, labelling, and final packaging.

## Bottling and Capping

After letting sit, the final liquid detergent is transferred to the filling machine for bottling, followed by a capping machine to screw caps onto the filled bottles. The bottling and capping process is fully automated. In our production line, the bottling machine and the capping machine are integrated into one combo, for better collaborative work and space-saving.

## Labelling and Coding

All production lines have their own labelling machines and date coding machines for single side, 2 sides and round labels. Alternatively, the labelling can be done in the bottle-blowing plant, which means the bottles are already labelled before being transferred to the liquid detergent filling line.

## Final Product Packaging

Bottled, capped, labelled, and coded products are finally transferred by a conveyor belt to a cartoner or a shrink wrapper for final packaging.



# Crown Detergent and Disinfectants Factory info

Crown Detergent & Disinfectant Factory was established in UAE in the year 2020 for manufacturing detergents and disinfectants, with technical knowhow from the UAE of over 20 years . Crown Detergent & Disinfectant Factory covers F&B, Kitchen, Housekeeping and Laundry products. Our state of the art automated plant located at Jabel Ali industrial area 1 , Dubai has a well-equipped laboratory , fully automated plant with capacity of 20tons per shift and with experienced staff to carefully monitor the quality of the products at every stage from manufacturing to packaging. Crown Detergent & Disinfectant Factory products are formulated to meet all international standards by sourcing raw materials from USA, UK, Europe, and Asia. We provide cost-effective and tailor-made solutions to customers as per their requirements. Crown Detergent & Disinfectant Factory in short span of time has become a leading brand in the industry catering to many reputed customers in the Middle East. Crown Detergent & Disinfectant Factory has positioned itself as a high-end provider of quality cleaning products supplying to HORECA and F&B industries. Crown Detergent & Disinfectant Factory is ably supported by experienced professionals and consultants in the industry and our products comply with all the required industry standards.



Mixing tanks



Pre Mixers



Production Line - 1



Mixing & Blending Area



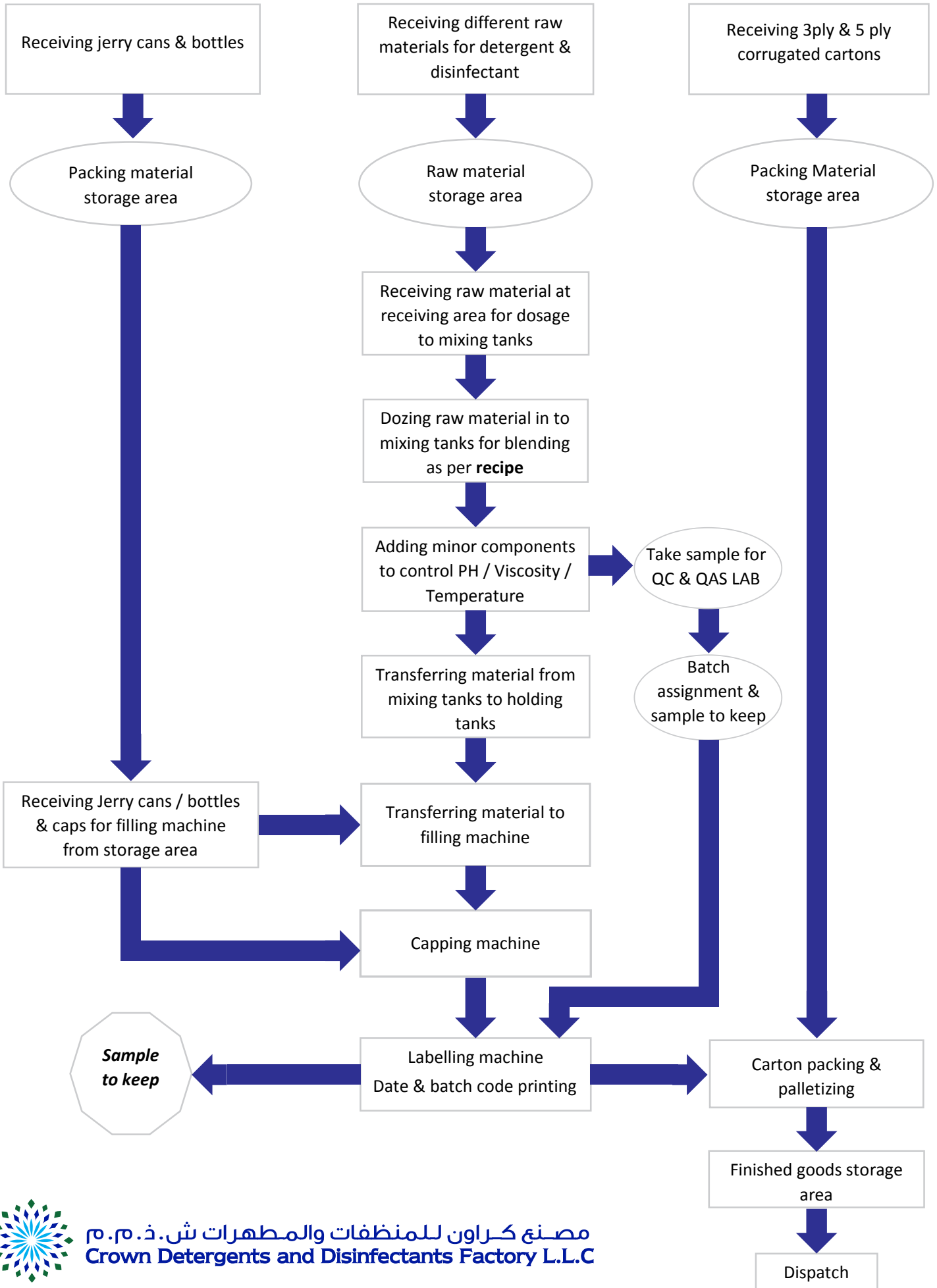
Production Line - 2



Laboratory



# Process flow chart – Crown Detergent & Disinfectant Factory





**مجموعة شركات حسني**  
**HASSANI GROUP OF COMPANIES**

*Since 1912*

ص.ب.: ٢٨٦ • دبي • الإمارات العربية المتحدة • تليفون: ٤٤ ٤٤ ٨٩٩ ٤ ٩٧١ + • فاكس: ٤٥ ٤٤ ٨٩٩ ٤ ٩٧١ +

P.O. Box : 286 • Dubai • United Arab Emirates • Tel. : +971 4 899 44 44 • Fax : +971 4 899 44 45 • E-mail: hassani@hassani.ae • www.hassanigroup.com